

featuring MAYFAIR COLLECTION BY AMY SINIBALDI

Arcade



x
x
x
x
x
x
x
x
x
x
x
x
x
x
x
x

ANGLES

A DIVISION OF AGF

FREE PATTERN

xxxxxxxxxxxxxxxxxxxxxxxxxxxxxxxxxxxx

Arcade

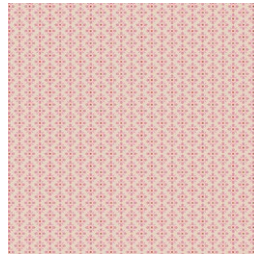
QUILT DESIGNED BY AMY SINIBALDI

MAYFAIR

FABRICS DESIGNED BY AMY SINIBALDI



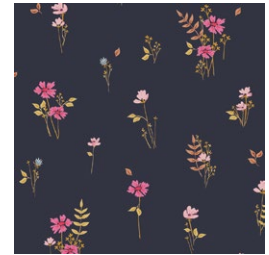
MAF-79200
BLAKES



MAF-79201
ROYAL ARCADE



MAF-79202
PROMENADE PLUM



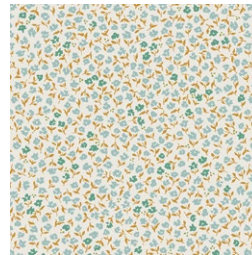
MAF-79203
COVENT GARDEN



MAF-79204
BROOKS MEWS



MAF-79205
SHEPHERD MARKET



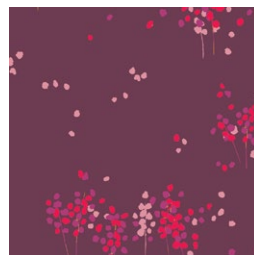
MAF-79206
PROMENADE MINT



MAF-79207
CHELSEA



MAF-79208
HYDE PARK BLUSH



MAF-79209
PICCADILLY



MAF-79210
AVERY ROW



MAF-79211
HYDE PARK FRESH

PE-408
WHITE LINEN



Arcade

FINISHED SIZE | 82" x 82"

FABRIC REQUIREMENTS

Fabric A	MAF-79210	¾ yd.
Fabric B	MAF-79203	1 ¾ yd.
Fabric C	MAF-79206	½ yd.
Fabric D	MAF-79207	¼ yd.
Fabric E	MAF-79201	¼ yd.
Fabric F	MAF-79205	⅜ yd.
Fabric G	PE-408	3 yd.

BACKING FABRIC

MAF-79207 6 yds (Suggested)

BINDING FABRIC

Fabric **F** MAF-79205 (Included)

CUTTING DIRECTIONS

¼" seam allowances are included.
WOF means width of fabric.

- Cut ten (10) 3⅞" x 3⅞" squares from fabric **D**, **E**.
- Cut forty (40) 3½" x 3½" squares. from fabric **C**.
- Cut sixty (60) 3½" x 6½" rectangles. from fabric **B**.
- Cut sixty (60) 3½" x 3½" squares. from fabric **B**, **A**.
- Cut seventy (70) 3½" x 3½" squares from fabric **G**.
- Cut forty (40) 3½" x 6½" rectangles from fabric **G**.
- Cut eight (8) WOF x 3½" strips from fabric **G**
- Cut ten (10) 9⅞" x 9⅞" squares from fabric **D**.

Sub cut:

- Nine (9) squares diagonally.
- One(1) square in four triangles.

CONSTRUCTION

Sew all rights sides together with ¼" seam allowance.

This quilt is made out of two blocks, Let's start with block 1.

Block 1

- For fabric placement and attachments refer to Diagram 1.
- You will need to make thirty (30) blocks 1.

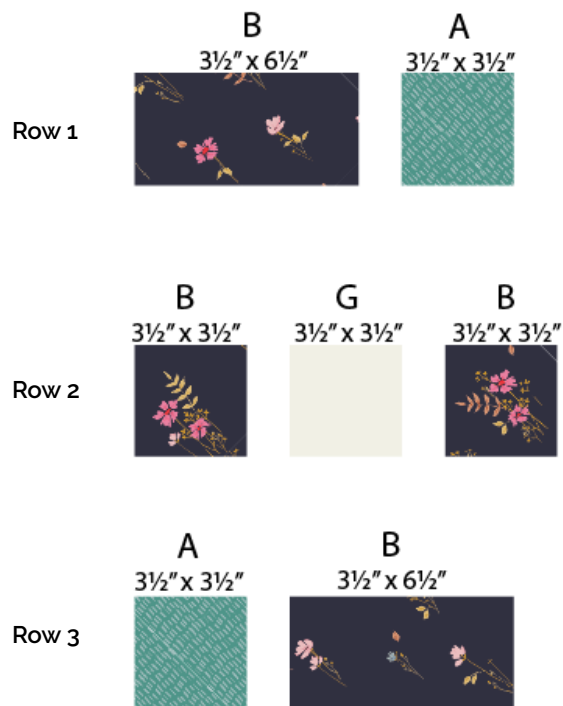


DIAGRAM 1

Sew rows together

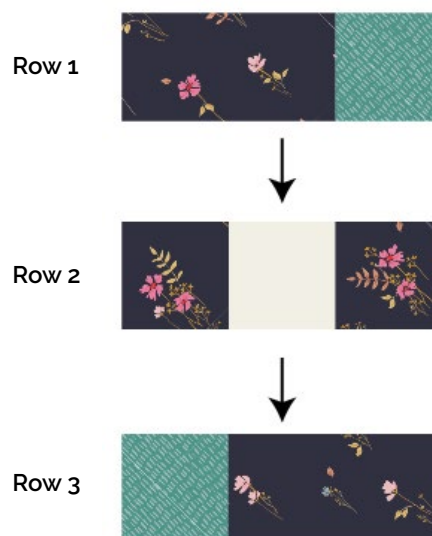


DIAGRAM 2

Block 1 (B1)



DIAGRAM 3

- For block 2 we will need a HST in the center of the block.

HST construction

- Place one (1) $3\frac{7}{8}$ " x $3\frac{7}{8}$ " squares from fabric **D** and **E** right sides together.
- Mark a diagonal line on the wrong side of the square.
- Sew $\frac{1}{4}$ " on both side of the drawn line.
- Using a rotary blade cut the square into two triangles.
- Trim each HST to a $3\frac{1}{2}$ " x $3\frac{1}{2}$ " square.



DIAGRAM 4

Block 2

- For fabric placement and attachments refer to Diagram 5.
- You will need to make Twenty (20) Blocks 2

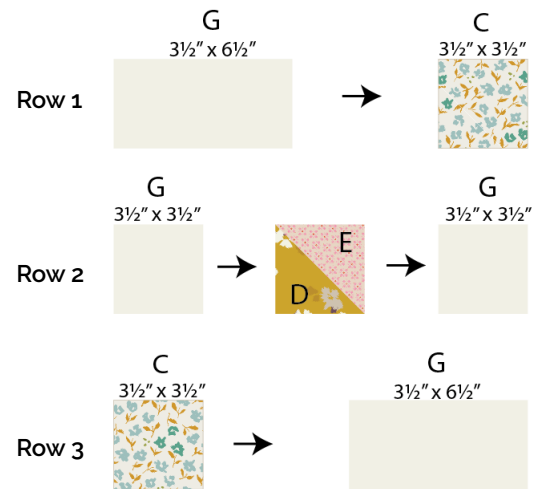


DIAGRAM 5

Sew rows together

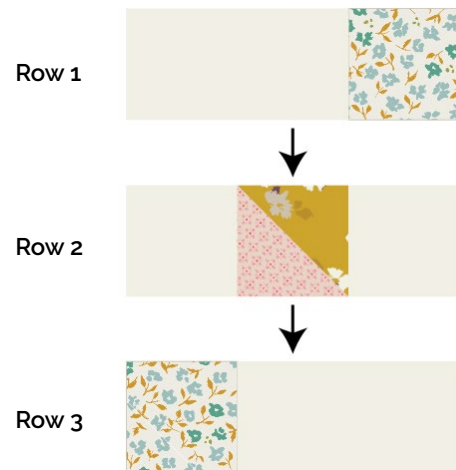


DIAGRAM 6

Block 2 (B2)



DIAGRAM 7

- Take four (4) triangles you cut out of one (1) 9"8" square from fabric **G**.
- Take the first triangle and sew it to the left side of block 1.
- Take the second triangle and sew it to the top of block 1.
- Take the third triangle and sew it to the right side of block 1.
- Take the fourth triangle and sew it to the bottom of block 1.
- See Diagram below for reference.

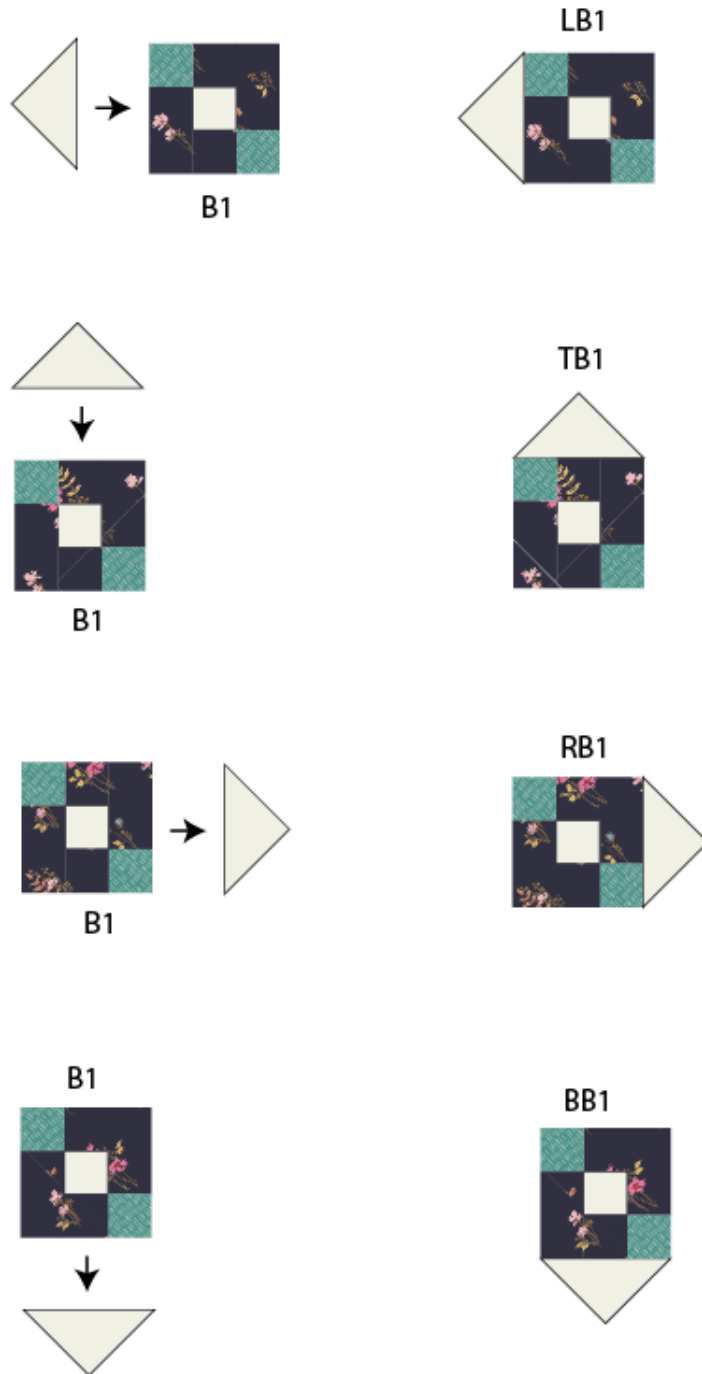


DIAGRAM 8

Follow Diagram below for Block placement and attachments by rows.

- Block 1 = B1
- Block 2= B2
- Triangles = T

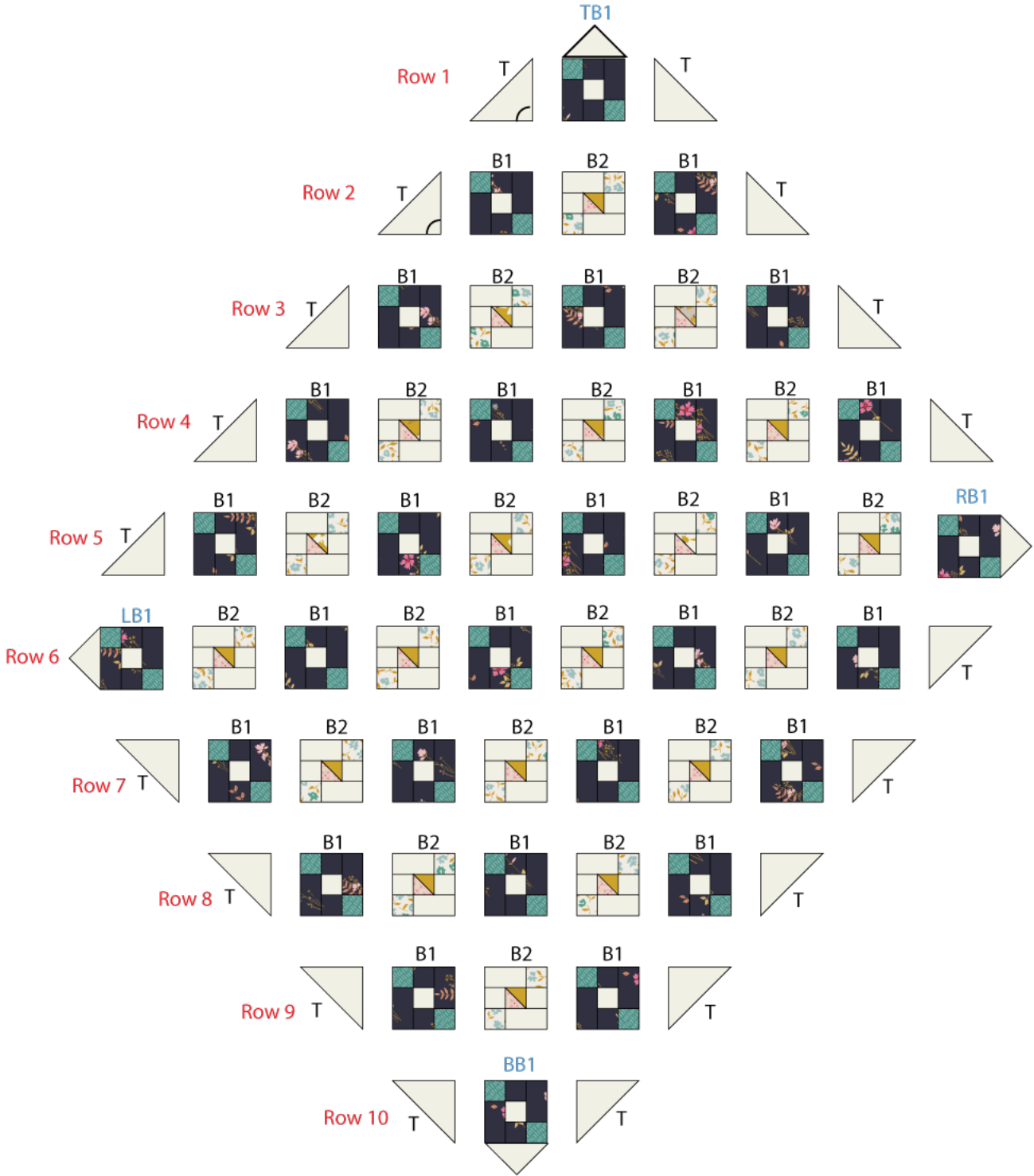


DIAGRAM 9

- Sew rows together.
- Follow the red dashed lines to know where to start sewing each row.

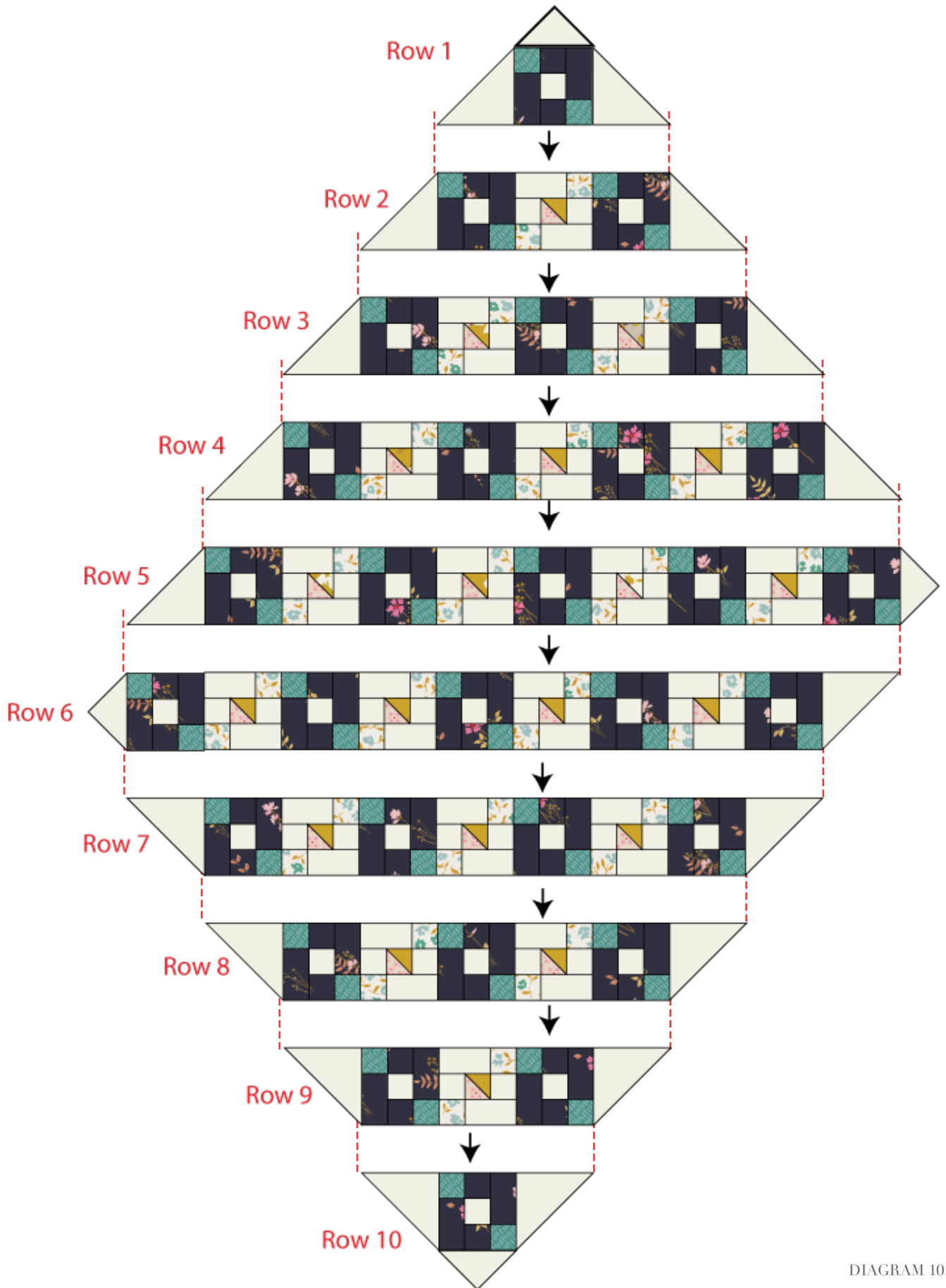


DIAGRAM 10

- Take two (2) WOF x 3½" from fabric G and sew them by the sides (Repeat the same steps 3 more times.)
- You should end up with four (4) 3½" x 84" strips.



DIAGRAM 11

- Take two (2) strips sewn in the previous step and attach them to each side of the quilt top. trim excess.

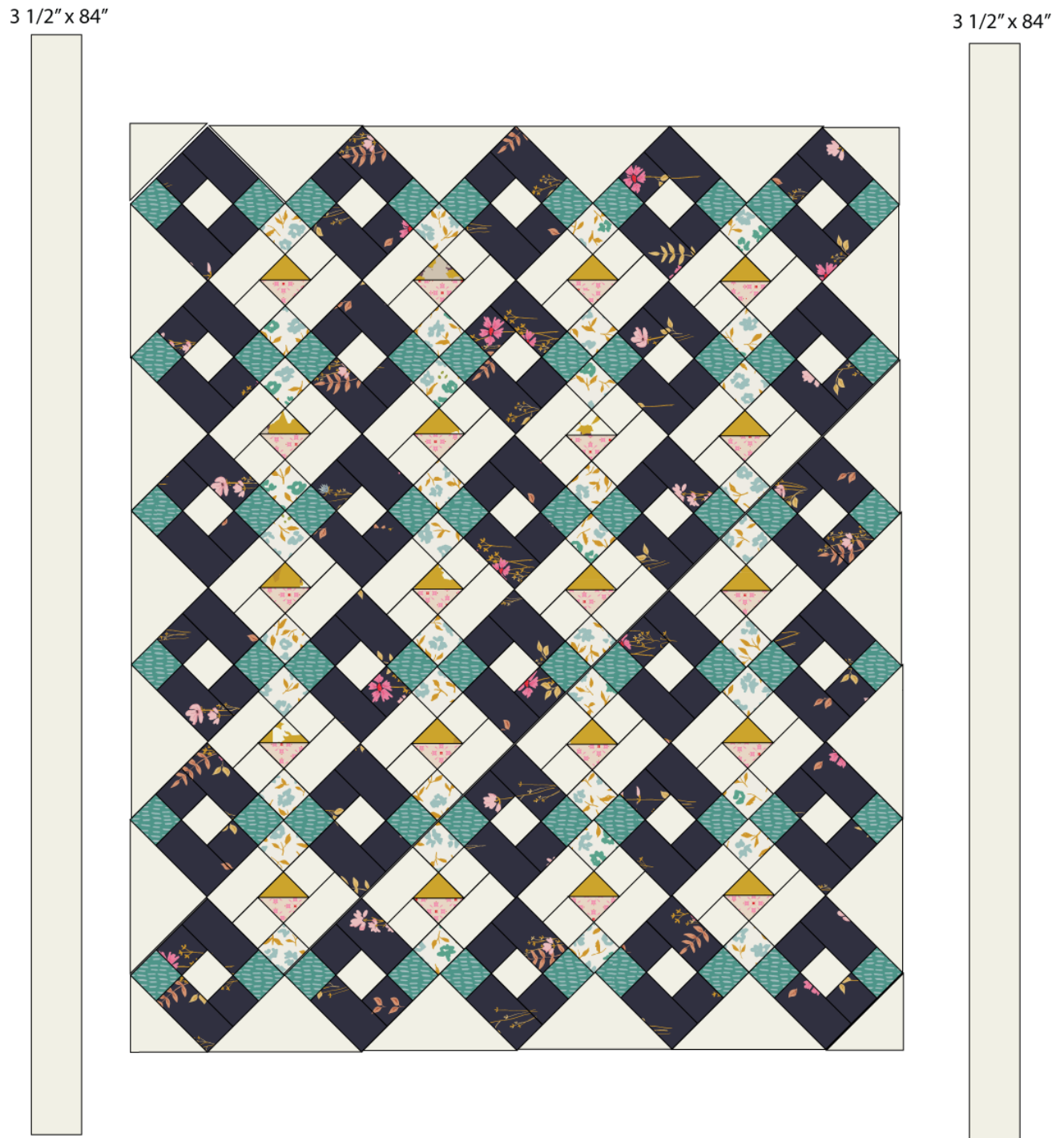
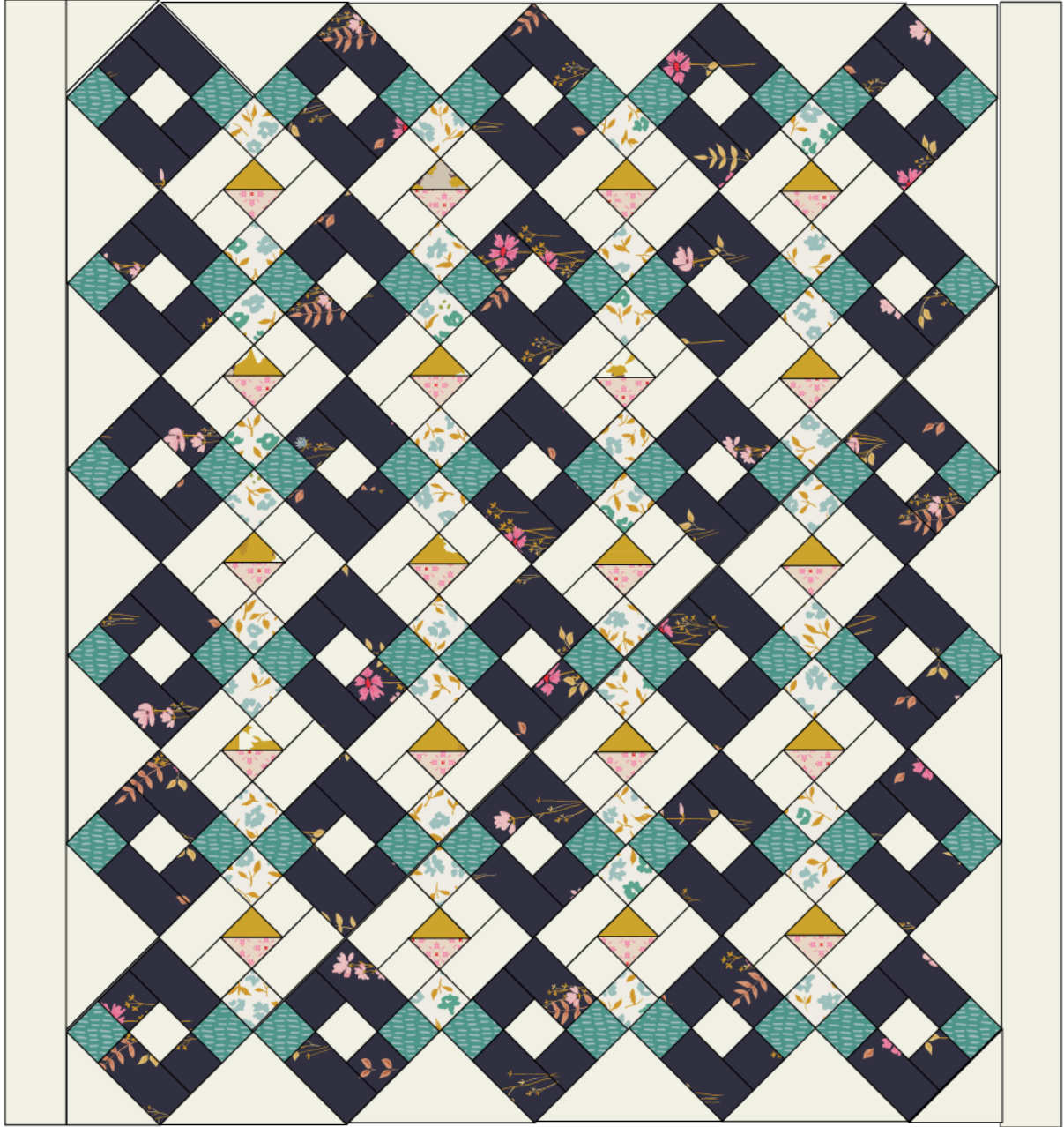
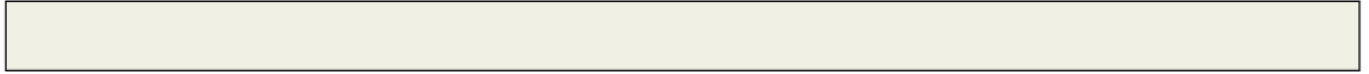


DIAGRAM 12

- Take the other two (2) strips and sew one to the top and the other one to the bottom of the quilt top trim excess on each side.

3 1/2" x 84"



3 1/2" x 84"

