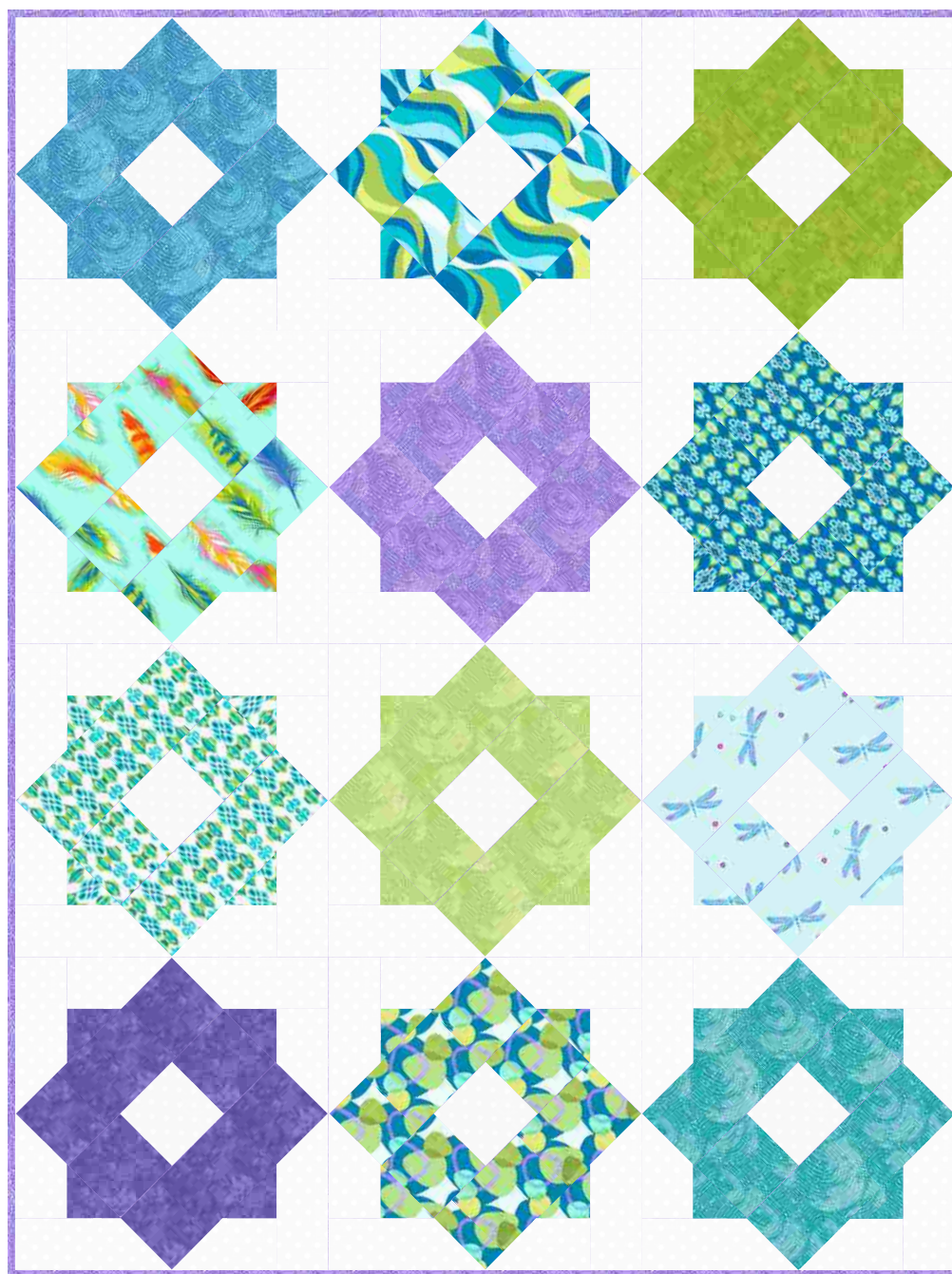


michael miller FABRICS

GARDEN DELIGHT

SIZE: 54" X 72" • LEVEL: ADVANCE BEGINNER • PATTERN BY: SUSAN EMORY • FABRIC COLLECTION: BOHO BOUTIQUE



PLEASE NOTE: BEFORE BEGINNING YOUR PROJECT, CHECK FOR ANY PATTERN UPDATES AT MICHAELMILLERFABRICS.COM
212.704.0774 | info@michaelmillerfabrics.com | www.michaelmillerfabrics.com



GARDEN DELIGHT



FABRIC A
SC5333 Bright White
2-1/2 yards



FABRIC B
CX8591 Aqua
Fat Quarter



FABRIC C
CX8592 Violet
Fat Quarter



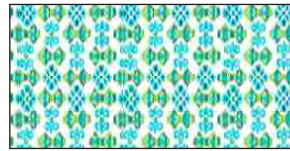
FABRIC D
CX8592 Blue
Fat Quarter



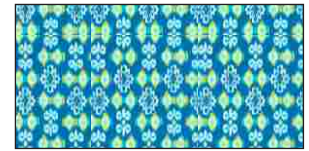
FABRIC E
CX8592 Teal
Fat Quarter



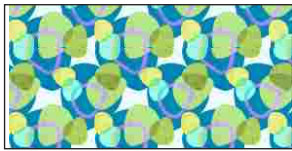
FABRIC F
CX8592 Kiwi
Fat Quarter



FABRIC G
CX8593 Aqua
Fat Quarter



FABRIC H
CX8593 Turquoise
Fat Quarter



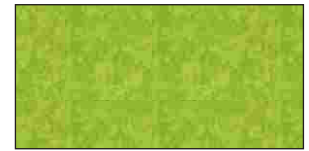
FABRIC I
CX8594 Turquoise
Fat Quarter



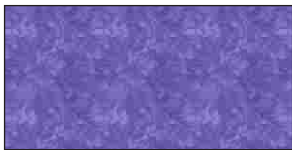
FABRIC J
CX8595 Turquoise
Fat Quarter



FABRIC K
CX8596 Aqua
Fat Quarter



FABRIC L
K4058 Kiwi
Fat Quarter



FABRIC L
K4295 Periwinkle
Fat Quarter



FABRIC M
CX8592 Violet
3-1/2 yards
(backing)



FABRIC N
CX8592 Violet
5/8 yard
(binding)

Garden Delight

54" x 72"


Cutting:

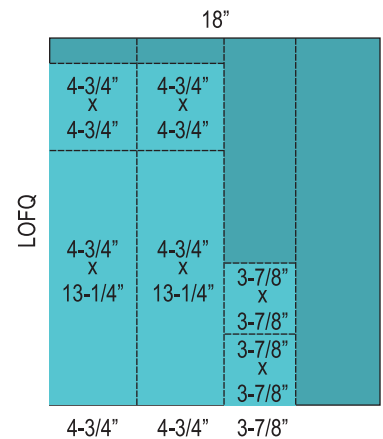
WOF = Width of Fabric

LOFQ = Length of Fat Quarter (20"-22")

From each accent fat quarter (Fabrics B-L):

Cut [2] 4-3/4" x LOFQ strips; subcut [2] 4-3/4" x 13-1/4" rectangles and [2] 4-3/4" squares

Cut [1] 3-7/8" x LOFQ strip; subcut [2] 3-7/8" squares and cut once diagonally 



From background fabric (Fabric A):

Cut [22] 3-1/2" x WOF strips; subcut [48] 3-1/2" x 6-7/8" rectangles and [48] 3-1/2" x 9-7/8" rectangles

Cut [2] 4-3/4" x WOF strips; subcut [12] 4-3/4" squares

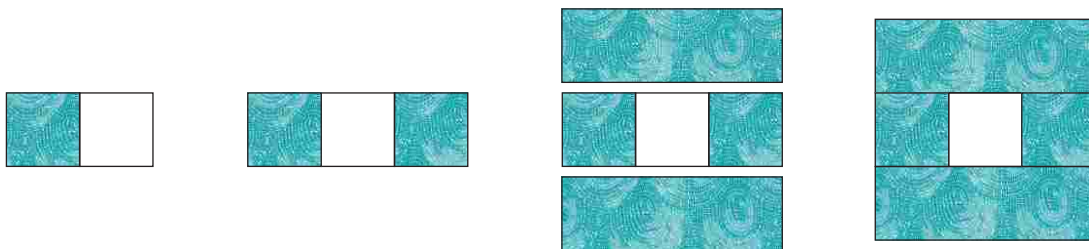
From binding fabric (Fabric N):

Cut [7] 2-1/2" x WOF strips

Piecing:

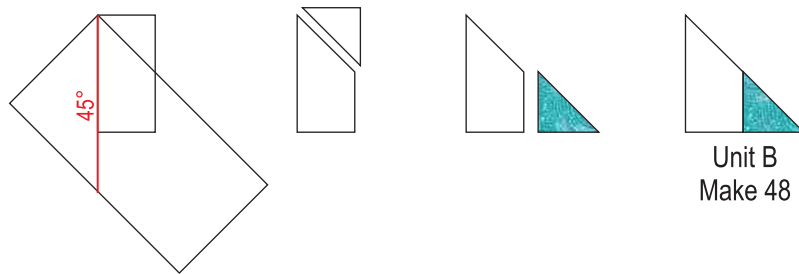
Choose [2] 4-3/4" accent fabric squares and [2] 4-3/4" x 13-1/4" accent fabric rectangles that match. Place a 4-3/4" accent fabric square, right sides together, on a 4-3/4" background square and sew. Press toward accent fabric. Add a second 4-3/4" accent fabric square to opposite side. Press toward accent fabric.

Sew a 4-3/4" x 13-1/4" accent fabric rectangle to top of block and a 4-3/4" x 13-1/4" accent fabric rectangle to bottom of block. Press toward accent fabric to complete Unit A. Block should measure 13-1/4" square. Repeat to make a total of [12] Unit A's, each from a different accent fabric.

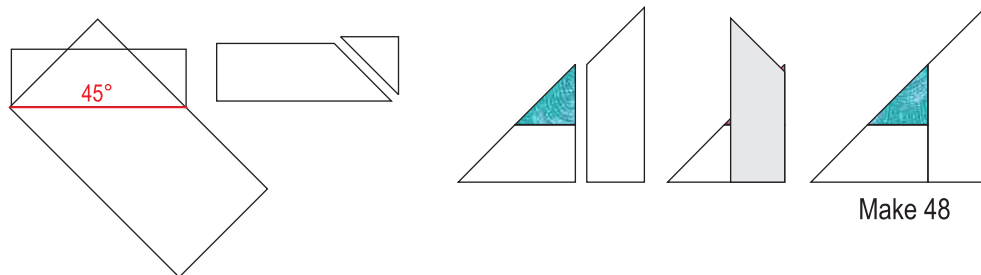


Unit A - Make 12

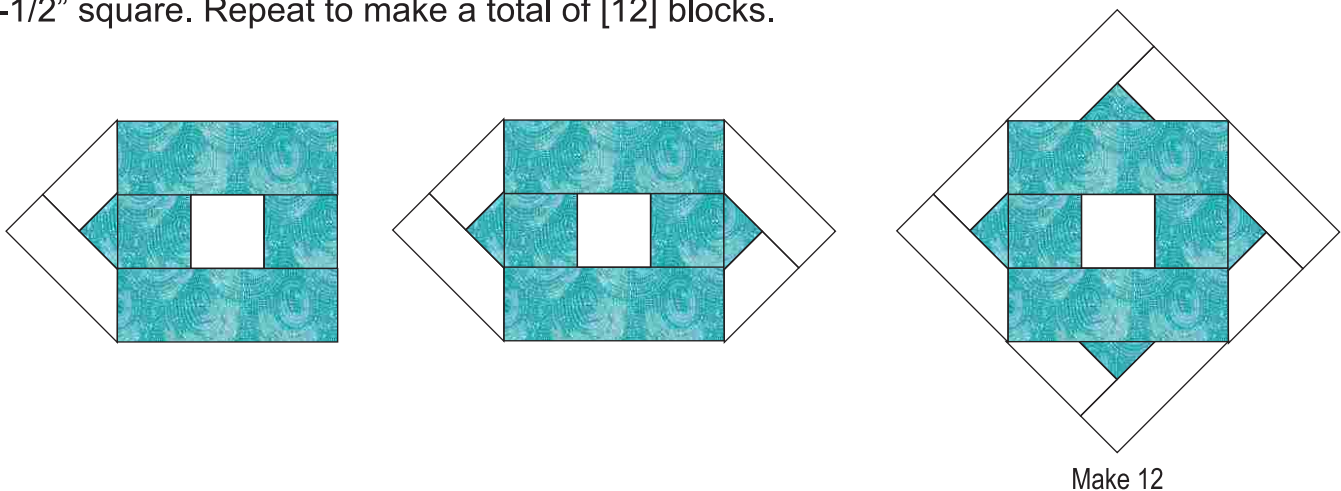
Place a 3-1/2" x 6-7/8" background rectangle vertically on your cutting mat, right side up. Line the 45° mark on your ruler on the left edge of rectangle with the corner on the top left side, as shown below and cut. Sew an Accent fabric triangle to the bottom, right side of cut background rectangle. Press toward accent triangle to complete Unit B. Repeat to make a total of [48] accent fabric Unit B's. You will have [4] each of 12 accent fabrics.



Place a 3-1/2" x 9-7/8" background rectangle horizontally on your cutting mat, right side up. Line the 45° mark on your ruler on the bottom edge of rectangle with the corner on the bottom right side, as shown below and cut. Sew cut background rectangle to Unit B as shown. Press toward background rectangle. Repeat with all accent fabric Unit B's for a total of [48].



Sew an accent fabric triangle unit to the left side of a matching Unit A. Press toward triangle. Add a second matching triangle unit to the right side of block and press toward triangle. Sew matching triangle units to top and bottom, pressing toward triangles. Block should measure 18-1/2" square. Repeat to make a total of [12] blocks.



Arrange blocks as shown on next page and sew together into horizontal rows. Sew rows together to complete quilt center.

Quilt as desired. Join binding strips together end to end and bind quilt edges.

Garden Delight

54" x 72"

