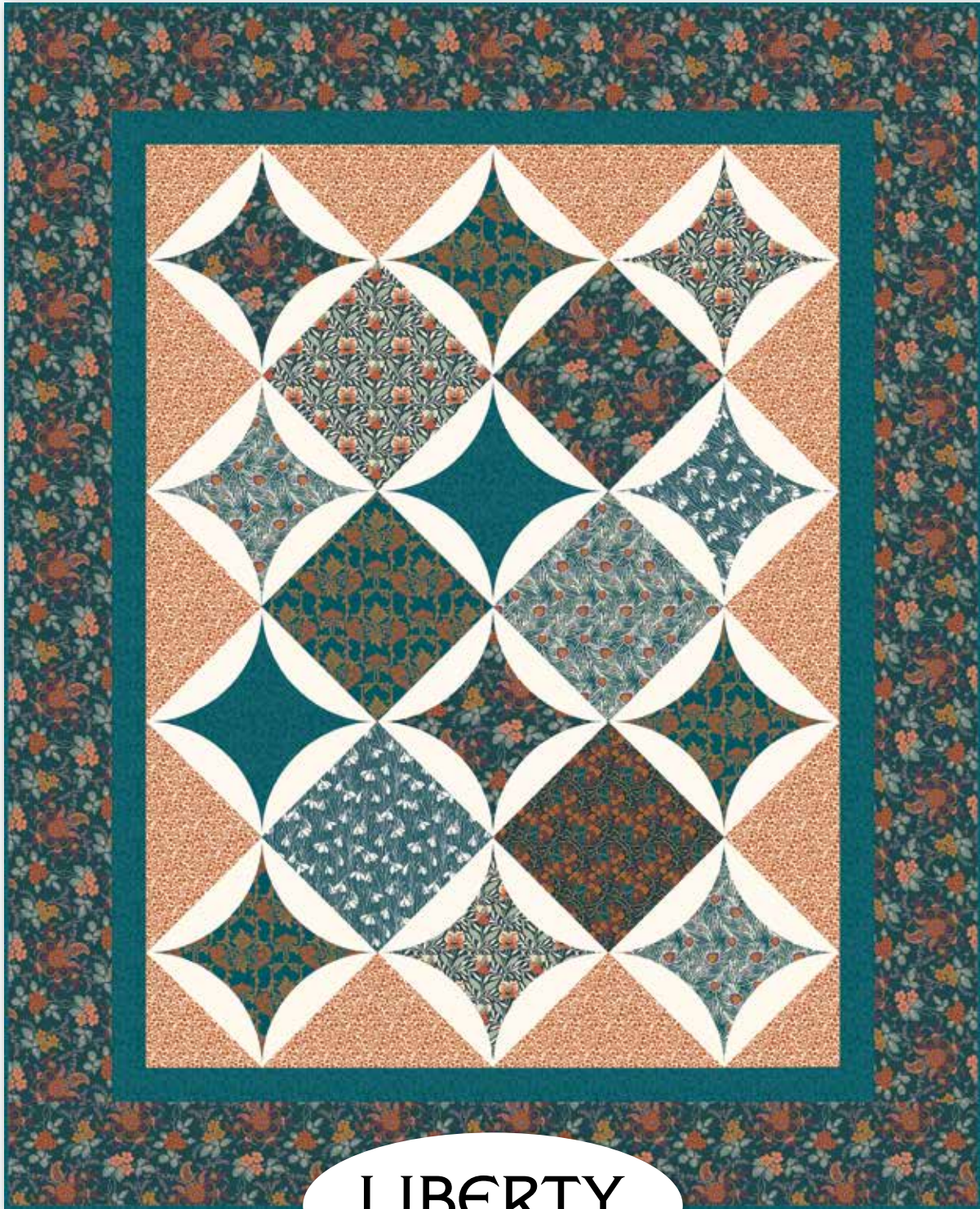


Mod Runway


Riley Blake
DESIGNS



LIBERTY

FABRICS

Mod Runway

FINISHED QUILT SIZE 56 $\frac{3}{8}$ " x 69 $\frac{3}{4}$ "

Finished Block Size 9 $\frac{1}{2}$ " x 9 $\frac{1}{2}$ "

Measurements include $\frac{1}{4}$ " seam allowance.

Sew with right sides together unless otherwise stated.

Please check our website www.rileyblakedesigns.com for any revisions before starting this project.

10" Stacker Friendly

FABRIC REQUIREMENTS

Blocks – 18 - 10" squares or $\frac{1}{2}$ yard cuts of six fabrics

Blocks – 1 yard white solid

Blocks – 2 yards light weight fusible interfacing

Setting & Corner triangles – $\frac{7}{8}$ yard

Inner Border – $\frac{3}{4}$ yard

Outer Border - 1 $\frac{1}{2}$ yards

Binding – $\frac{5}{8}$ yard

CUTTING REQUIREMENTS

Please read instructions first before cutting. Seam allowances vary so measure through the center of the quilt before cutting border pieces.

Blocks

Cut 18 squares 10" x 10" from assorted prints.

Cut 48 half circle templates with seam allowance from white solid.

Corner Triangles

Cut 2 squares 8" x 8".

Cut each square once diagonally to make 4 triangles.

Setting Triangles

Cut 3 squares 14 $\frac{3}{4}$ " x 14 $\frac{3}{4}$ ".

Cut each square twice diagonally to make 12 triangles. You will have 2 extra triangles.

Inner Border

Cut 5 strips 2 $\frac{1}{2}$ " x WOF.

Outer Border

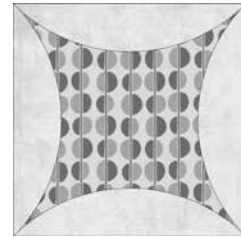
Cut 6 strips 6 $\frac{1}{2}$ " x WOF.

QUILT ASSEMBLY

Refer to quilt photo for placement of fabrics.

Runway Blocks

Lay right sides of the half circle pieces on bumpy side of fusible interfacing. Stitch along the top of the half circles using a small stitch length to make a nice curve. Trim seam allowance and turn right side out. Refer to quilt photo for placement of half circle pieces. Use your favorite method of appliqué to attach the half circle pieces to all 4 sides of 12 blocks. (We used the interfacing to keep the darker fabric from showing through the white solid.)



Runway Block

Quilt Center Assembly

See quilt photo for block and setting triangle placement. Sew rows together on the diagonal to complete the center of the quilt. Add corner triangles. Before adding borders square up quilt center leaving $\frac{1}{4}$ " seam allowance on all sides.

Borders

Seam allowances vary so measure through the center of the quilt before cutting border pieces. Sew side borders first.

Inner Border

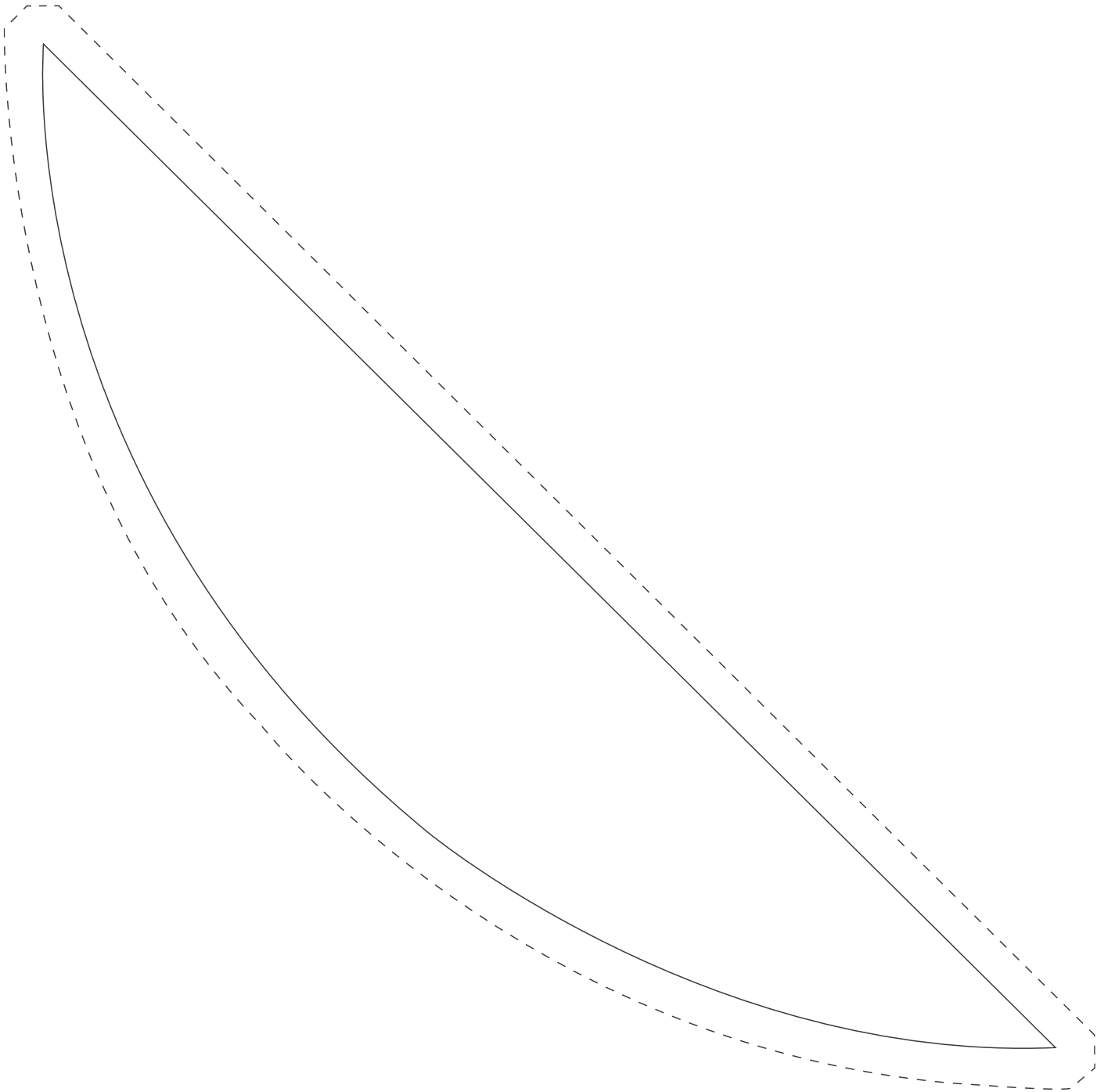
Side borders should be 54 $\frac{1}{4}$ ". Top and bottom borders should be 44 $\frac{7}{8}$ ".

Outer Border

Side borders should be 58 $\frac{1}{4}$ ". Top and bottom borders should be 56 $\frac{7}{8}$ ".

Finish quilt by layering the quilt top, batting, and back. Bind with your favorite fabric. Have fun with your colors and enjoy the journey of making your quilt.

Mod Runway



This should
measure
1 inch.